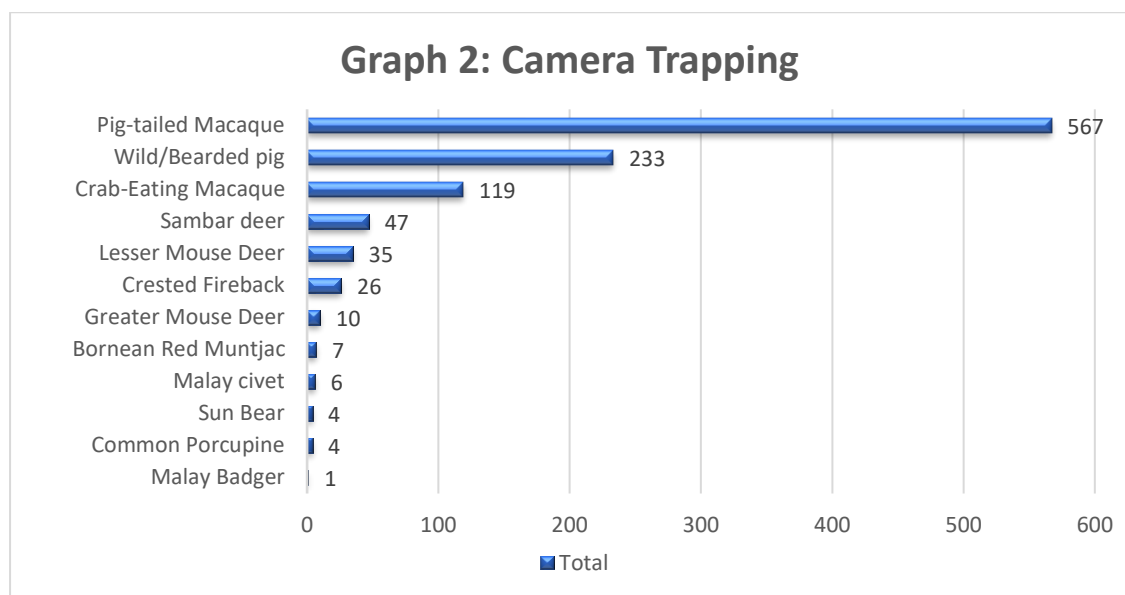


CAMERA TRAPPING JAN – DEC 2019

Graph below shows that Pig-Tailed Macaque, followed by Wild/ Bearded Pig, are two species with the highest number of probabilities to be photo-captured by camera traps set-up inside the Forest Reserve. The pig-tailed macaque is classified under Schedule 2 (Section 2) Part 1 (Section 25(2)) Protected Animals of the Sabah Wildlife Conservation Enactment 1997 and listed as Vulnerable by the IUCN Red List. The Wild/Bearded Pig is classified under Schedule 3 (Section 2, 25(2)), Sabah Wildlife Conservation Enactment 1997. The elusive Sun Bear was photo-captured four times in the Forest Reserve. Sun Bear is classified under Schedule 1 (Section2) Part I (Section 25(1)) Totally Protected Animals of the Sabah Wildlife Conservation Enactment 1997 and listed as Vulnerable by the IUCN Red List. This is crucial information/ data, showing that the Project Area is an important habitat for this Protected wildlife. The camera traps were set-up randomly by our wildlife monitoring unit, inside the forest reserves area, for a duration 2 months before data collecting.



BIL	Species	1 st Quarter (Jan-Mar)	2 nd Quarter (Apr-Jun)	3 rd Quarter (July-Sept)	4 th Quarter (Oct-Dec)	Total
01.	Pig-tailed Macaque	97	106	61	303	567
02.	Malay Badger	0	0	0	1	1
03.	Lesser Mouse Deer	1	26	7	1	35
04.	Wild/Bearded pig	44	48	12	129	233
05.	Sambar deer	29	0	2	16	47
06.	Crab-Eating Macaque	30	9	30	50	119
07.	Crested Fireback	12	2	3	9	26
08.	Malay civet	3	3	0	0	6
09.	Common porcupine	1	1	2	0	4
11.	Bornean Red Muntjac	1	0	0	6	7
13.	Sun Bear	1	0	0	3	4
14.	Greater Mouse Deer	9	0	1	0	10
	TOTAL					1059

Table 6: Camera Trapping data recorded from January 2019 until December 2019